

Posaune

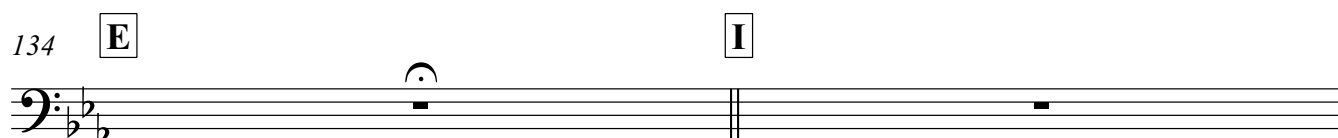
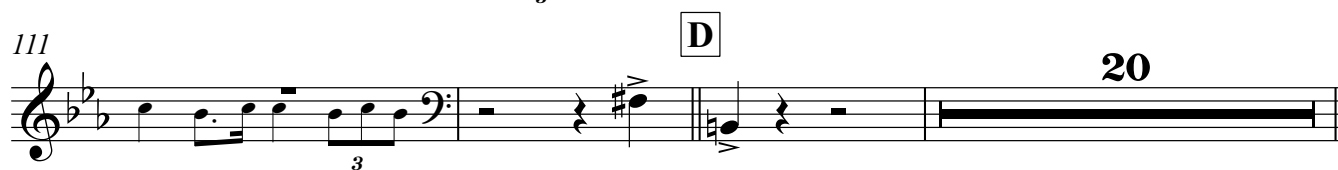
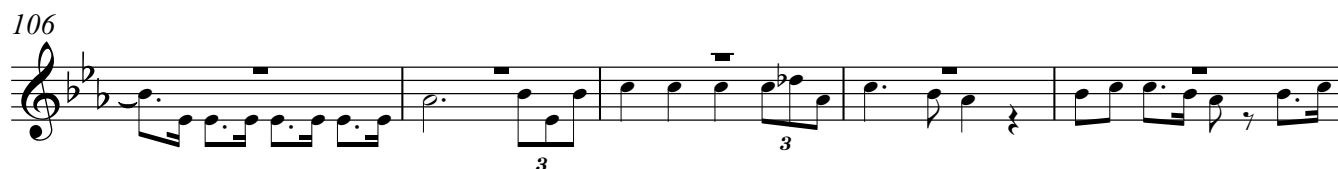
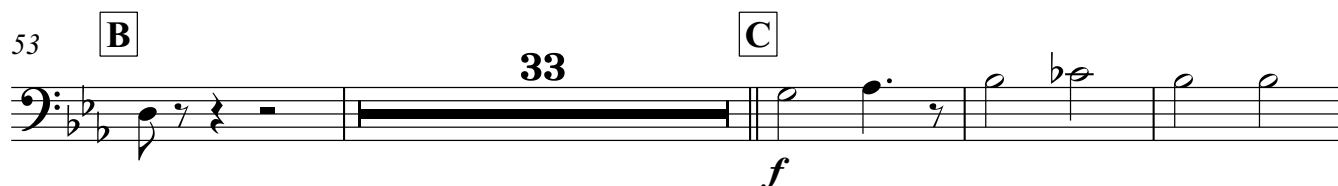
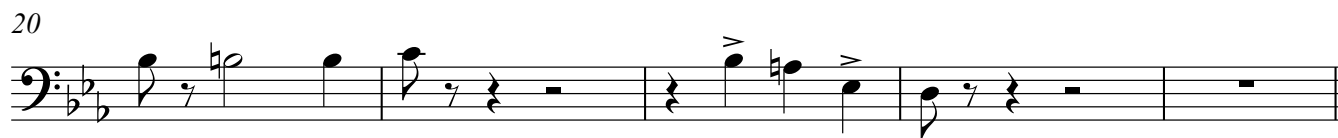
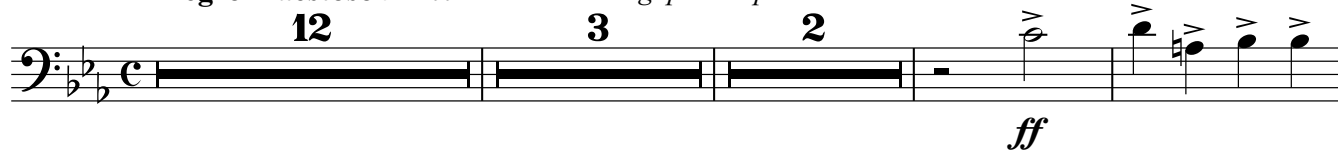
Aida II. Akt  
Triumphmarsch und Chor  
"Gloria all'Egitto"

**SYMPHONIC**  
**MOB** DSO

G. Verdi

Vereinfachte Stimmen J. Riihimäki

**Allegro maestoso** ♩ = 100 *Cresc. e string. poco a poco*



136

156

*f*

143

143 **J** Più animato (♩ = 132). *poco a poco*

*ff* pesante *f*

158

[illegible]

165

[illegible]

171

176

[illegible]

182

The bass line of 'The Rose Tree' is written on a single staff in bass clef. The key signature has two flats (B-flat and E-flat). The melody consists of eighth and quarter notes, with some notes beamed together. The final note is a quarter note G.

188

The musical notation shows a bass line starting on a C major scale. The first measure contains three eighth notes: G2, F2, and E2. The second measure contains two half notes: D2 and C2. The third measure contains four quarter notes: B1, A1, G1, and F1. The fourth measure contains four quarter notes: E1, D1, C1, and B0.

192

The bass line of 'The Rose Tree' is written in 3/4 time, key of B-flat major (two flats). It consists of four measures. The first measure contains a half note G2 and a quarter note G2, beamed together. The second measure contains a half note A2. The third measure contains a half note Bb2. The fourth measure contains a half note C3. The melody is written in the treble clef, and the bass line is written in the bass clef.